



z-Logg.com

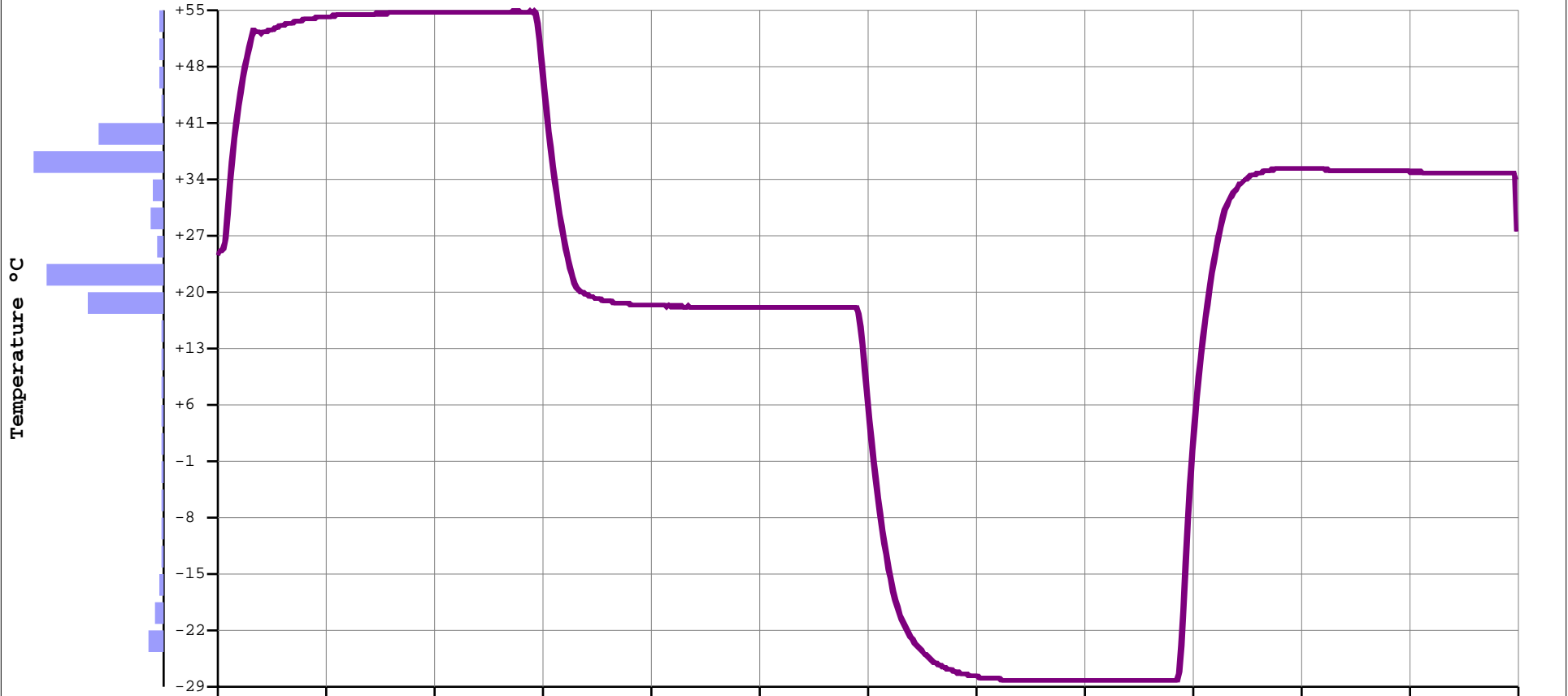
Specification & Configuration	
Device Name:	z1LcdMu
Device Type:	Multi-use Temp/Hum
Serial Number:	ZM6C0001
Time Zone:	GMT:+1
Firmware Version:	1.22C
Software Version:	1.04.78 Admin
Trip Number:	2
Trips Remaining:	Multiple
Temp. Unit:	Celsius
Temp. Range:	-40 to +80°C
Battery:	3.06V - 100%
Total Records:	6638
Sampling Rate:	30 sec
Start Delay:	0 sec
Start Time:	19/12/16 21:00
Stop Time:	Parameter not set



Alarms (Time above / below Alarms)				
Type:	Temp.	Consecutive	Total	Out of Spec.
EH:	not set			
H:	not set			
L:	not set			
EL:	not set			

Summary / Statistics		File Created at: 25/12/16 22:26:33	
Maximum Temperature:	+58.00°C	Status:	Stopped
Minimum Temperature:	-28.14°C	Trip Duration:	01d 03:39:00
Average Temperature:	+21.93°C	Time within Spec:	01d 03:39:00
Mean Kinetic Temp:	+18.68°C	Started Time:	19/12/16 21:00:00
Active Bookmarks:	0	Stopped Time:	21/12/16 00:39:19
Started by:	Start timer	Memory Used:	14% 6638/45567
Stopped by:	Manual	File Created by:	zLoggManager
		Calibration due:	19/12/2017

Description: zLogg Calibration Test



Max. #502	21:00:00	23:18:16	01:36:33	03:54:49	06:13:06	08:31:22	10:49:39	13:07:56	15:26:12	17:44:29	20:02:45	22:21:02	00:39:19
+34.0/+37.5°C	19/12/16	19/12/16	20/12/16	20/12/16	20/12/16	20/12/16	20/12/16	20/12/16	20/12/16	20/12/16	20/12/16	20/12/16	21/12/16

#Readings

Time/Date (dd/mm/yy)

Notes:

This z1LcdMu with an accuracy of +/-0.3°C from -40°C to +80°C (+/-0.6°F from -40°F to +176°F) and an resolution of 0.01°C (°F) has been calibrated in the calibration chamber of zLogg. The reference equipment used is traceable to National Institute of Standards and Technology. Device:#ZM6C0001



z-Logg.com

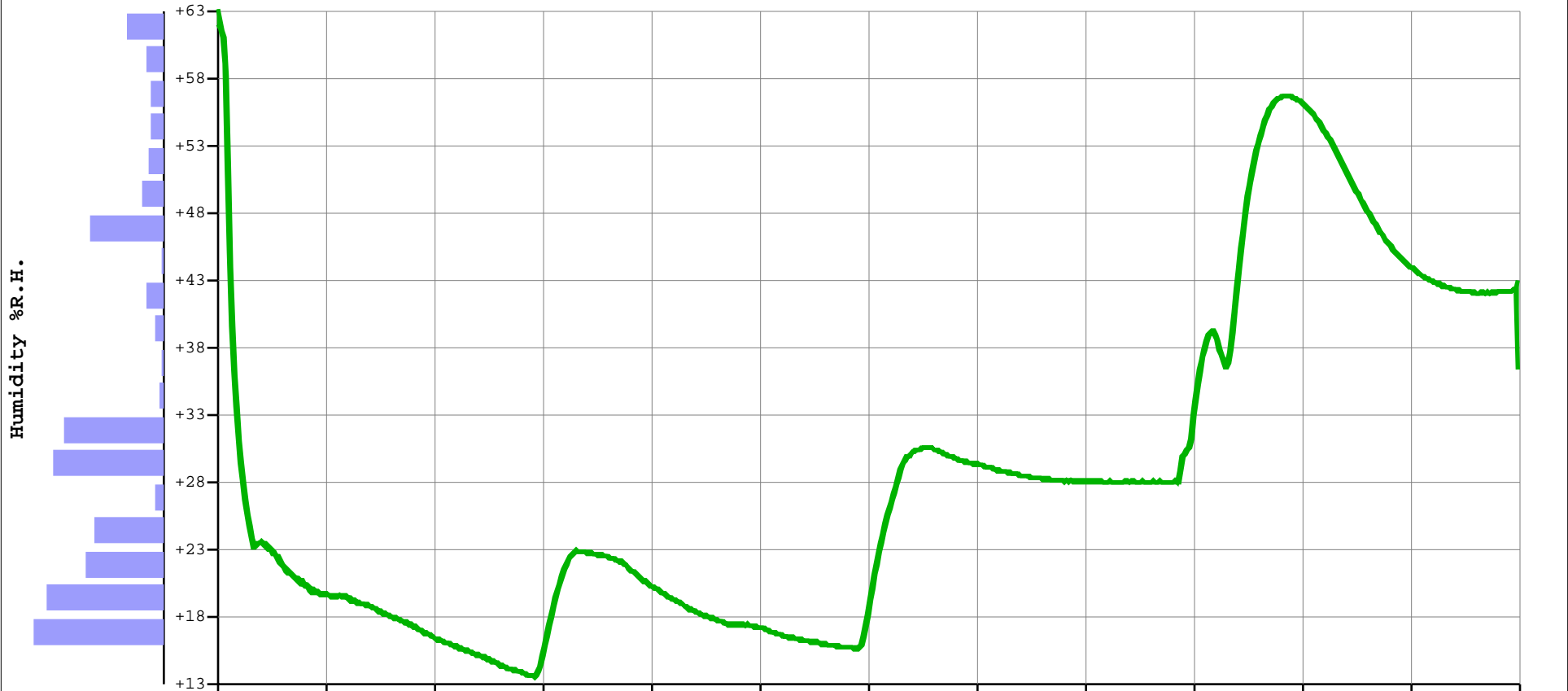
Specification & Configuration	
Device Name:	z1LcdMu
Device Type:	Multi-use Temp/Hum
Serial Number:	ZM6C0001
Time Zone:	GMT:+1
Firmware Version:	1.22C
Software Version:	1.04.78 Admin
Trip Number:	2
Trips Remaining:	Multiple
Temp. Unit:	Celsius
Temp. Range:	-40 to +80°C
Battery:	3.06V - 100%
Total Records:	6638
Sampling Rate:	30 sec
Start Delay:	0 sec
Start Time:	19/12/16 21:00
Stop Time:	Parameter not set



Alarms (Time above / below Alarms)				
Type:	Hum.	Consecutive	Total	Out of Spec.
EH:	not set			
H:	not set			
L:	not set			
EL:	not set			

Summary / Statistics		File Created at: 25/12/16 22:26:33	
Maximum Humidity:	+69.92°C	Status:	Stopped
Minimum Humidity:	+13.73°C	Trip Duration:	02d 07:18:30
Average Humidity:	+30.62°C	Time within Spec:	02d 07:18:30
Active Bookmarks:	0	Started Time:	19/12/16 21:00:00
Started by:	Start timer	Stopped Time:	21/12/16 00:39:19
Stopped by:	Manual	Memory Used:	14% 6638/45567

Description: zLogg Calibration Test



Max. #473	21:00:00	23:18:16	01:36:33	03:54:49	06:13:06	08:31:22	10:49:39	13:07:56	15:26:12	17:44:29	20:02:45	22:21:02	00:39:19
+15.5/+18.0%	19/12/16	19/12/16	20/12/16	20/12/16	20/12/16	20/12/16	20/12/16	20/12/16	20/12/16	20/12/16	20/12/16	20/12/16	21/12/16

#Readings

Time/Date (dd/mm/yy)

Notes:

This z1LcdMu with an accuracy of +/-0.3°C from -40°C to +80°C (+/-0.6°F from -40°F to +176°F) and an resolution of 0.01°C (°F) has been calibrated in the calibration chamber of zLogg. The reference equipment used is traceable to National Institute of Standards and Technology. Device:#ZM6C0001