



z-Logg.com

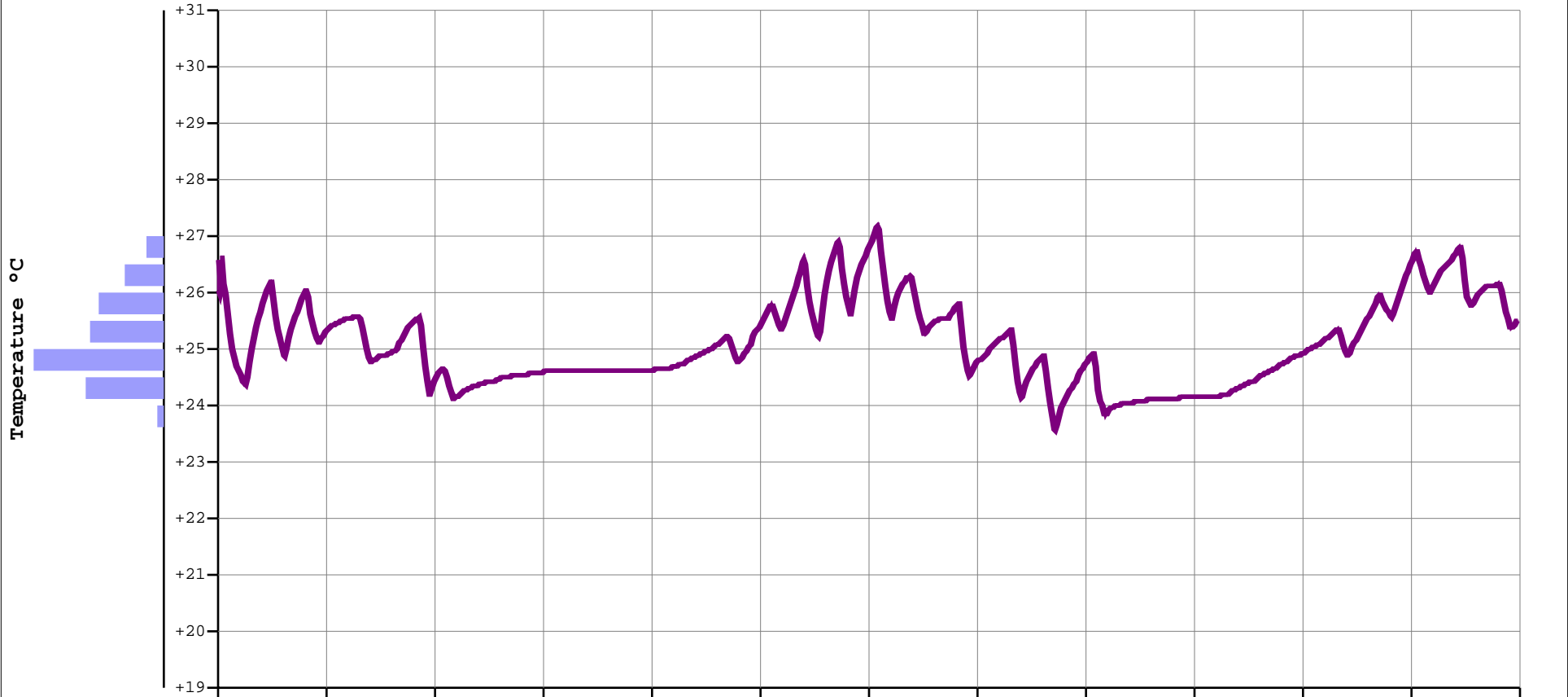
Specification & Configuration	
Device Name:	z1LcdMu
Device Type:	Multi-use Int.Temp.
Serial Number:	ZM660097
Time Zone	GMT:+1
Firmware Version:	1.22C
Software Version:	1.04.78 Admin
Trip Number:	4
Trips Remaining:	Multiple
Temp. Unit:	Celsius
Temp. Range:	-40 to +80°C
Battery:	3.12V - 100%
Total Records:	6620
Sampling Rate:	30 sec
Start Delay:	0 sec
Start Time:	23/12/16 12:47
Stop Time:	Parameter not set



Alarms (Time above / below Alarms)				
Type:	Temp.	Consecutive	Total	Out of Spec.
EH:	not set			
H:	not set			
L:	not set			
EL:	not set			

Summary / Statistics		File Created at: 25/12/16 19:57:07	
Maximum Temperature:	+27.21°C	Status:	Recording
Minimum Temperature:	+23.57°C	Trip Duration:	02d 07:09:30
Average Temperature:	+25.10°C	Time within Spec:	02d 07:09:30
Mean Kinetic Temp:	+25.10°C	Started Time:	23/12/16 18:47:00
Active Bookmarks:	0	Stopped Time:	26/12/16 01:56:40
Started by:	Start timer	Memory Used:	14% 6620/45567
Stopped by:		File Created by:	zLoggManager
		Calibration due:	28/12/2001

Description: zLogg default settings



Max. #2062	18:47:00	23:22:48	03:58:36	08:34:25	13:10:13	17:46:01	22:21:50	02:57:38	07:33:26	12:09:15	16:45:03	21:20:51	01:56:40
+24.5/+25.0°C	23/12/16	23/12/16	24/12/16	24/12/16	24/12/16	24/12/16	24/12/16	25/12/16	25/12/16	25/12/16	25/12/16	25/12/16	26/12/16

#Readings

Time/Date (dd/mm/yy)

Notes:

This z1LcdMu with an accuracy of +/-0.3°C from -40°C to +80°C (+/-0.6°F from -40°F to +176°F) and an resolution of 0.01°C (°F) has been calibrated in the calibration chamber of zLogg. The reference equipment used is traceable to National Institute of Standards and Technology. Device:#ZM660097