



z-Logg.com

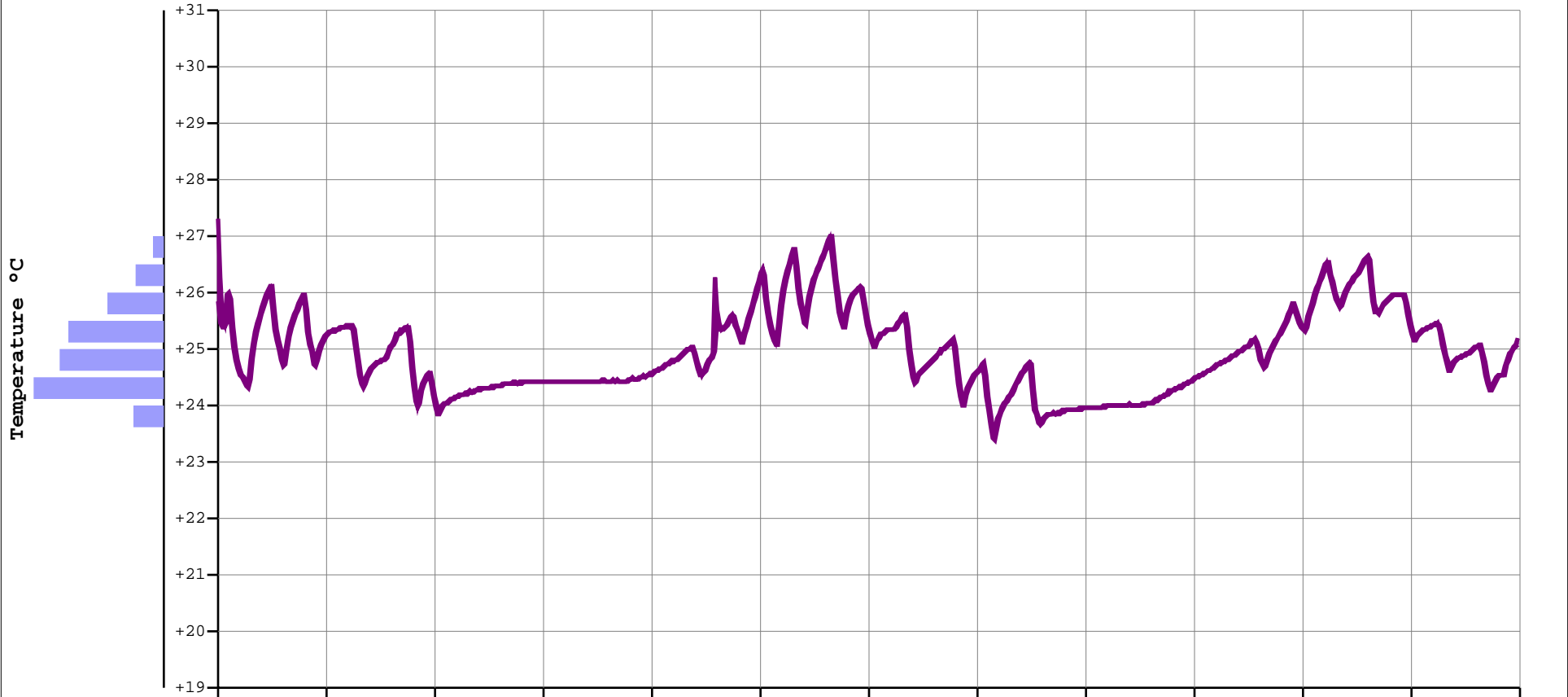
Specification & Configuration	
Device Name:	z1Mu
Device Type:	Multi-use Int.Temp.
Serial Number:	1M6C1000
Time Zone:	GMT:+1
Firmware Version:	1.18A
Software Version:	1.04.78 Admin
Trip Number:	5
Trips Remaining:	Multiple
Temp. Unit:	Celsius
Temp. Range:	-40 to +80°C
Battery:	2.99V - 95%
Total Records:	7178
Sampling Rate:	30 sec
Start Delay:	0 sec
Start Time:	23/12/16 12:35
Stop Time:	Parameter not set



Alarms (Time above / below Alarms)				
Type:	Temp.	Consecutive	Total	Out of Spec.
EH:	not set			
H:	not set			
L:	not set			
EL:	not set			

Summary / Statistics		File Created at: 26/12/16 00:24:11	
Maximum Temperature:	+27.32°C	Status:	Recording
Minimum Temperature:	+23.40°C	Trip Duration:	02d 11:48:30
Average Temperature:	+24.94°C	Time within Spec:	02d 11:48:30
Mean Kinetic Temp:	+24.94°C	Started Time:	23/12/16 18:35:00
Active Bookmarks:	0	Stopped Time:	26/12/16 06:23:43
Started by:	Start timer	Memory Used:	56% 7178/12792
Stopped by:		Calibration due:	28/12/2017

Description: Default settings



Max. #2013	18:35:00	23:34:03	04:33:07	09:32:10	14:31:14	19:30:17	00:29:21	05:28:25	10:27:28	15:26:32	20:25:35	01:24:39	06:23:43
+24.0/+24.5°C	23/12/16	23/12/16	24/12/16	24/12/16	24/12/16	24/12/16	25/12/16	25/12/16	25/12/16	25/12/16	25/12/16	26/12/16	26/12/16

#Readings

Time/Date (dd/mm/yy)

Notes:

This z1Mu with an accuracy of +/-0.3°C from -40°C to +80°C (+/-0.6°F from -40°F to +176°F) and an resolution of 0.01°C (°F) has been calibrated in the calibration chamber of zLogg. The reference equipment used is traceable to National Institute of Standards and Technology. Device:#1M6C1000